



---

## **CD ROM NETWORKING AND RECORDING SYSTEMS**

Toll Free 800-482-1866 Telephone 305-597-3980 Fax 305-594-4443. Please call for questions

# Server Appliance User's Guide



---

## **CD ROM NETWORKING AND RECORDING SYSTEMS**

Toll Free 800-482-1866 Telephone 305-597-3980 Fax 305-594-4443. Please call for questions

### Table of contents

Un-boxing and powering up your Server.....	3
Logging into and configuring the Server.....	4
Installing Terminal Services.....	5
Running Terminal Services.....	6
Making the Server Headless.....	7



## **CD ROM NETWORKING AND RECORDING SYSTEMS**

Toll Free 800-482-1866 Telephone 305-597-3980 Fax 305-594-4443. Please call for questions

### **Un-boxing and powering up your Server**

Remove the Server and any other enclosures from there packaging. Take a moment to look over the parts checklist to make sure you have everything.

Main Server
If you have a rack mount, look for the rails
Power Cord(s)
Drives for the network boards and motherboard

If you ordered this system with a separate RAID enclosure

Raid enclosure
Power cord(s)
Keys for enclosure
Cable(s) for connecting Raid to main server

Make all the necessary connections; keyboard, mouse, monitor and network.

If there is a separate RAID enclosure connect the SCSI cable from the enclosure to the main Server power up the RAID and then power up the Main Server.

If it appears that you are missing something or you have a question in general, you can contact JES Tech Support @ 800-482-1866.



## CD ROM NETWORKING AND RECORDING SYSTEMS

Toll Free 800-482-1866 Telephone 305-597-3980 Fax 305-594-4443. Please call for questions

### Logging into and configuring the Server



When the server has finishing power up, and the login prompt shows, enter “administrator” as the user. At this point you are now ready to

Configure the Network Adapter(s)
Authenticate this Server into a Domain
Create the Share for your storage Drive
Set the Time and Date

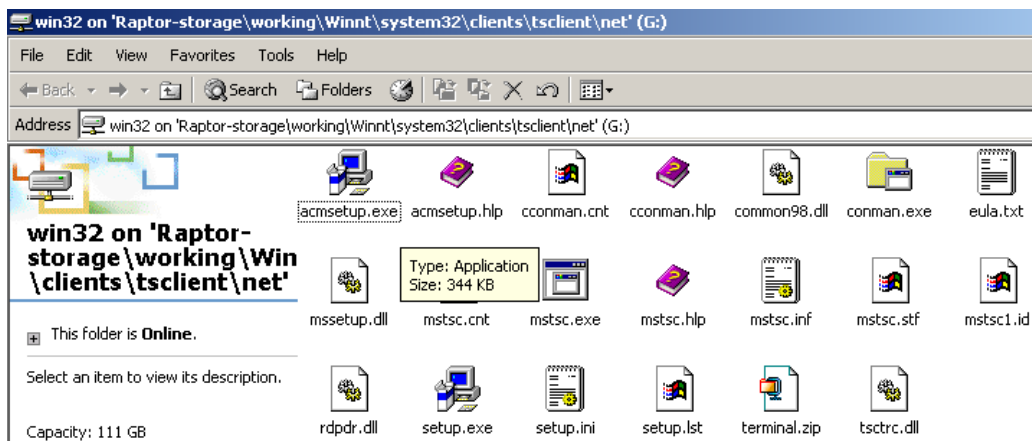
At this point in time you are ready to start using the server for storage.

## CD ROM NETWORKING AND RECORDING SYSTEMS

Toll Free 800-482-1866 Telephone 305-597-3980 Fax 305-594-4443. Please call for questions

### Installing Terminal Services

Your server comes with the Terminal services setup program. You will need to map a drive letter to: WINNT\SYSTEM32\CLIENTS\TSCLIENT\NET\WIN32. In here you will find the setup program. Run it and Terminal services will be installed onto your workstation.

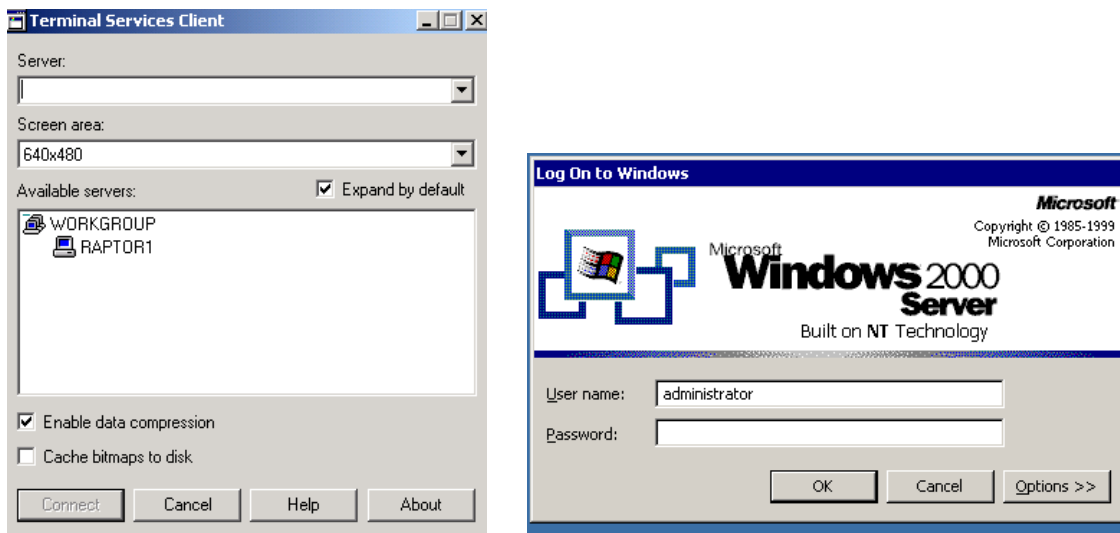


## CD ROM NETWORKING AND RECORDING SYSTEMS

Toll Free 800-482-1866 Telephone 305-597-3980 Fax 305-594-4443. Please call for questions

### Running Terminal Services

When running the program you will be presented with a list of the servers within the workgroup. Double click on the proper server and you will see the Windows login prompt.



It is recommended that you install Terminal Services on your workstation before attempting to make the server Headless, which will be discussed in the next section.



## CD ROM NETWORKING AND RECORDING SYSTEMS

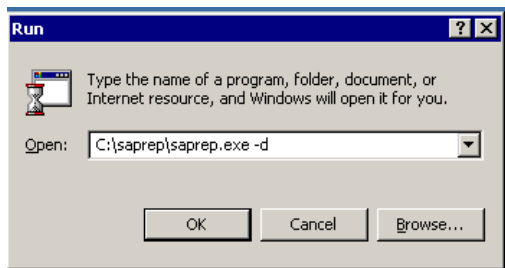
Toll Free 800-482-1866 Telephone 305-597-3980 Fax 305-594-4443. Please call for questions

### Making the Server Headless

When the Server ships to you the Keyboard, Mouse and Monitor are all functioning. If you want to make the server headless (which means the keyboard, mouse and video will not function) you can run the “saprep utility”. This file is located in the “saprep” directory on the local Hard of the server. You will need to run this program from the start menu because you will need to add additional syntax to the command line.

Saprep -d : will disable VGA, Mouse, and Keyboard. After running this you will need to set the video driver to null. This driver is in the saprep directory.

Saprep -u: will turn everything back on.



You can reverse the process through Terminal Services. Just make sure you do not forget the IP address of the server.

If you have any questions call me 800-482-1866 ask for William Sessions.

Sincerely,

William Sessions  
Tech Support